



FOUNDATION FOR COMMON LAND

A gathering of those with a stake in pastoral commons and their future

Creating a Viable Future

from Marginal Grazing



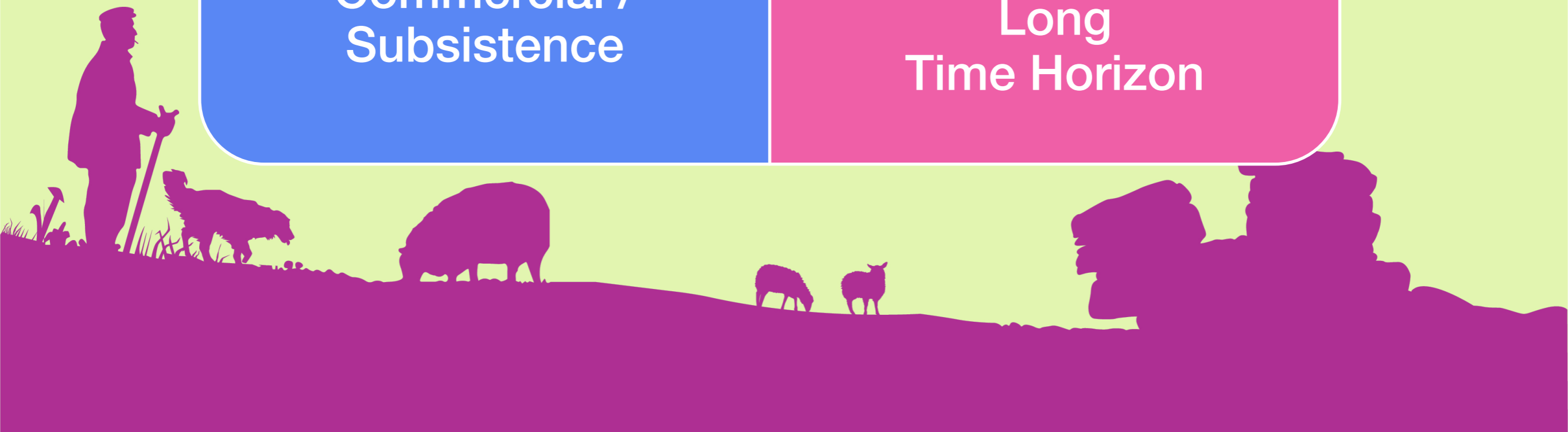
**Personal / Societal
Outcomes**

**Agriculture /
Environment / Cultural
/ Diversification
Outputs**

**What
Constitutes
Viable
Grazing?**

**Commercial /
Subsistence**

**Short / Medium /
Long
Time Horizon**



There are over 3900 Farmers who are Commoners in England



**39% OF OPEN ACCESS
LAND IS COMMON LAND**



**11% OF SCHEDULED
MONUMENTS ARE ON COMMONS**



**82% OF COMMONS ARE IN
NATIONAL PARKS & AONBs**



**21% OF ALL SSSIs ARE
COMMON LAND**

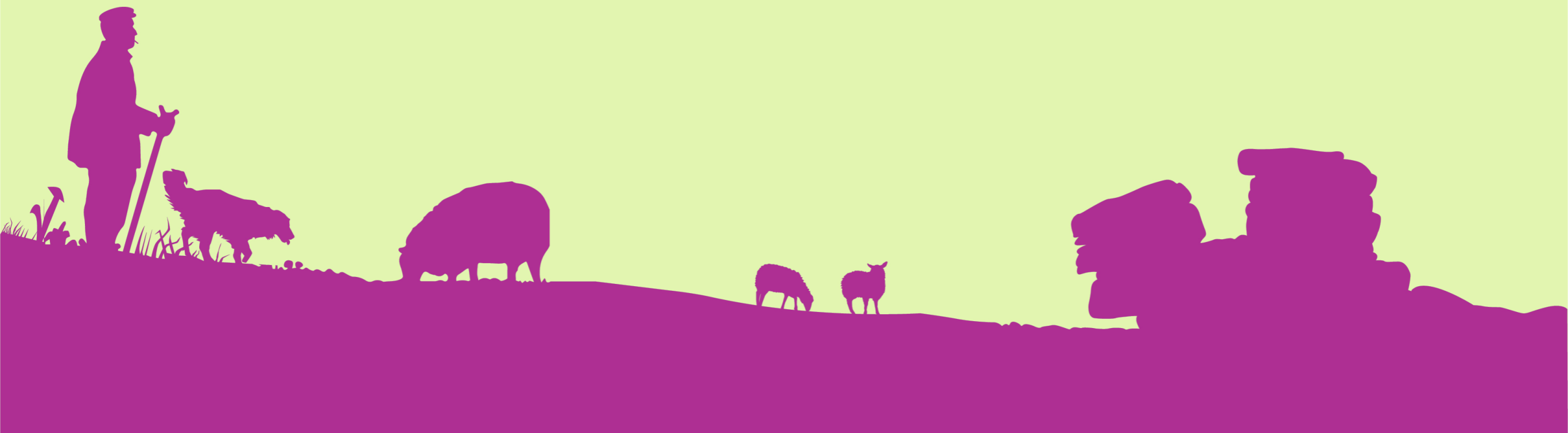
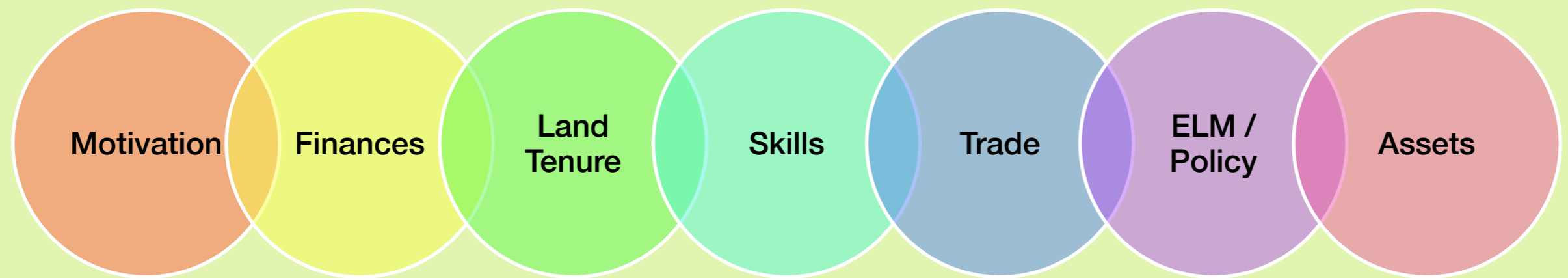


In Partnership since 2012





What will Viability Depend on.....



Co-creating Positive Change

The Commoners Vision for Holne Moor

Holne Moor is an open grazed landscape managed by several Commoners. The grazing is carried out by a mixture of sheep, cattle and ponies of a hardy hill type. There is extensive archaeology with good examples clearly visible. The good condition of the various habitats store carbon, provide clean water and reduce flood risk. The whole common is a dynamic system that supports a large and diverse bird population along with many other species including rare Fritillary butterflies.



Extensive unique reeve system, parts of which are clearly visible in the landscape.

Hut circles bracken free and clearly visible.

Healthy Mires free from bracken encroachment.

Mine workings. Good whortleberry heath with some heather and some thin bracken

Areas of dense bracken cover

Habitats

Upland Heath, Blanket Bog, Deciduous Woodland, Acid Grassland, Valley Mire

A mosaic of different heights and densities in gorse dominated heath.

Increased tree cover in some areas

Acid grassland has short well grazed vegetation with thin bracken.

Healthy Blanket Bog

Whole area supports large and diverse bird population

Areas of dense bracken cover

Hut circles bracken free and clearly visible.

A mosaic of different heights and densities in gorse dominated heath with a good network of paths/firebreaks.

Areas of good habitat for High Brown, Pearl Bordered and Small Pearl Bordered butterflies.

All areas

Grazing by cattle, sheep and ponies

Public and livestock able to freely move across most areas without competing for paths or causing erosion.

Livestock free from dog worrying



Demonstrating by Doing

Documenting and Disseminating



Our Common Cause:
Our Upland Commons

Enabling a
shared future
for all



FOUNDATION FOR COMMON LAND

A gathering of those with a stake in pastoral commons and their future

Julia Aglionby

@4CommonLand

www.foundationforcommonland.org.uk

