



FOUNDATION FOR COMMON LAND

A gathering of those with a stake in pastoral commons and their future

SFI Moorland Webinar Introductory Standard

Commons: Getting Ready to Apply & Digital Survey Tools

9th November 2022



Defra ELM Test & Trial

Policy Update

SFI Moorland Update



Health Warning – ELM / SFI is still in development and subject to change

SFI Moorland Introductory Standard

- **No land management actions or stocking restrictions required**
- **You will survey the common, identify public goods and plan opportunities**
- **Can stack on top of a CS or HLS agreement**

**£16.45 per ha per year for Commons
3 year scheme**



What you **MUST** do before Applying on a Common

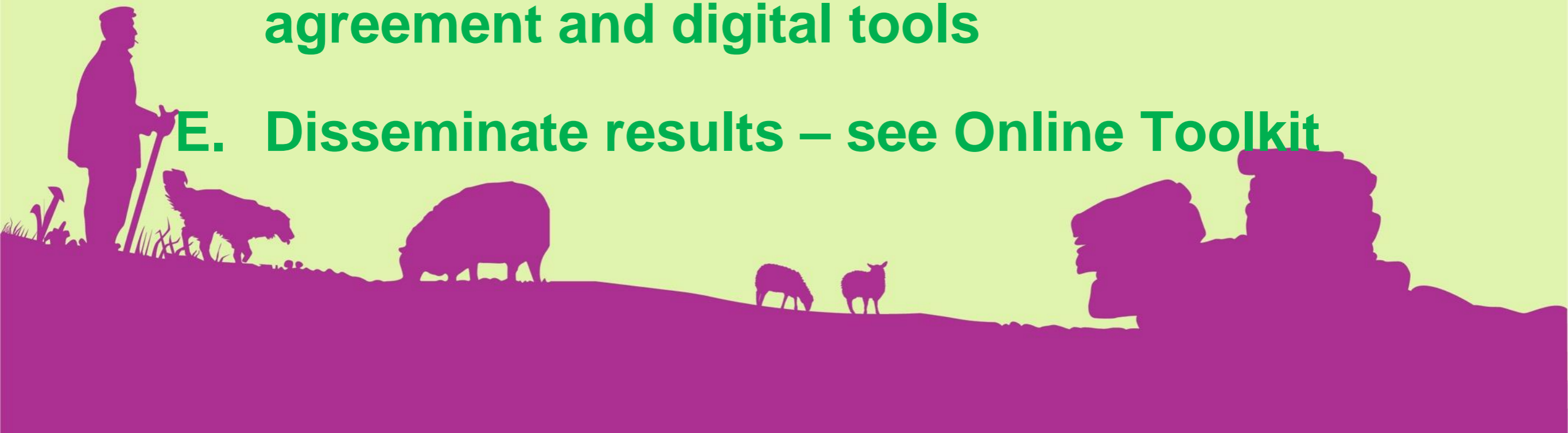
1. Have a single entity with an RPA nominated representative, a SBI & bank account. Must be the same as that holding CS/HLS
2. Check you can you deliver the 3-year SFI Moorland standard: called Management control
3. Take reasonable steps to contact and consult those with a legal interest
4. Sign a formal, legally enforceable internal arrangement between the members of the group



SFI22 Moorland Road Testing

Three Upland Commons are Road Testing SFI

- A. Undertaking the SFI as if for real**
- B. Being paid the full rate for the task**
- C. Supported by a local facilitator**
- D. FCL provides template letters, internal agreement and digital tools**
- E. Disseminate results – see Online Toolkit**

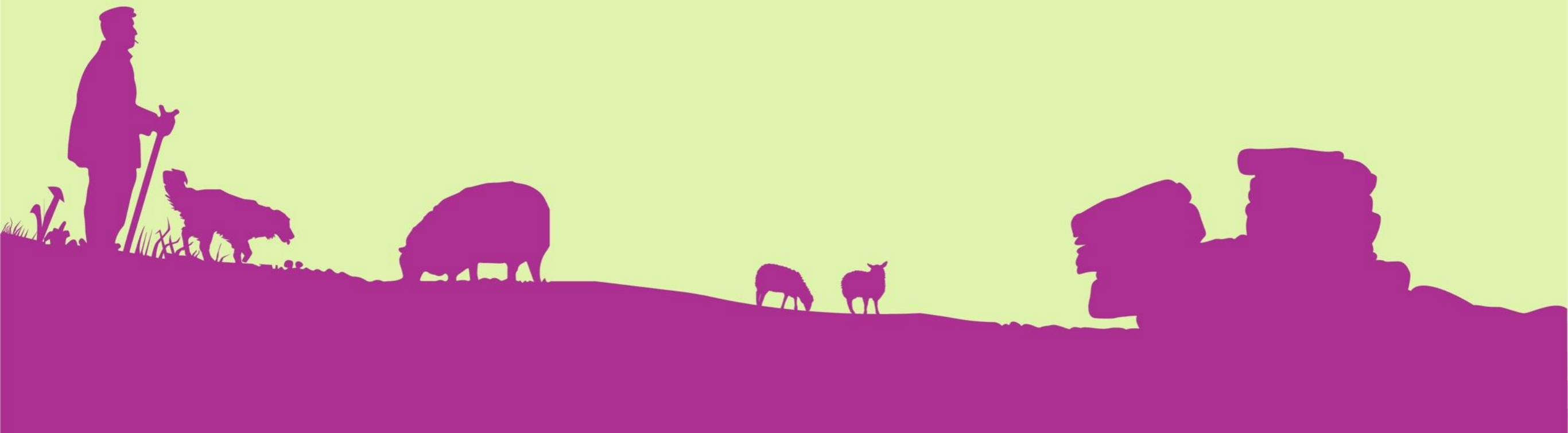


FCL Toolkit



At the heart of England's most loved and visited places are Commons.

We're working to protect them.



Tonight's Webinar

1. **Viv Lewis: Pre-application steps: live registers and consulting legal interests**
2. **Sam McAlister: Preparing the Internal Agreement**
3. **Dan Geerah: Demonstrating Digital Tools**
4. **Commoners and Local Facilitators in conversation**

